

Hur påverkar flykting- invandringen lågutbildade på arbetsmarknaden?

Lars Calmfors

SNS

31 januari 2017

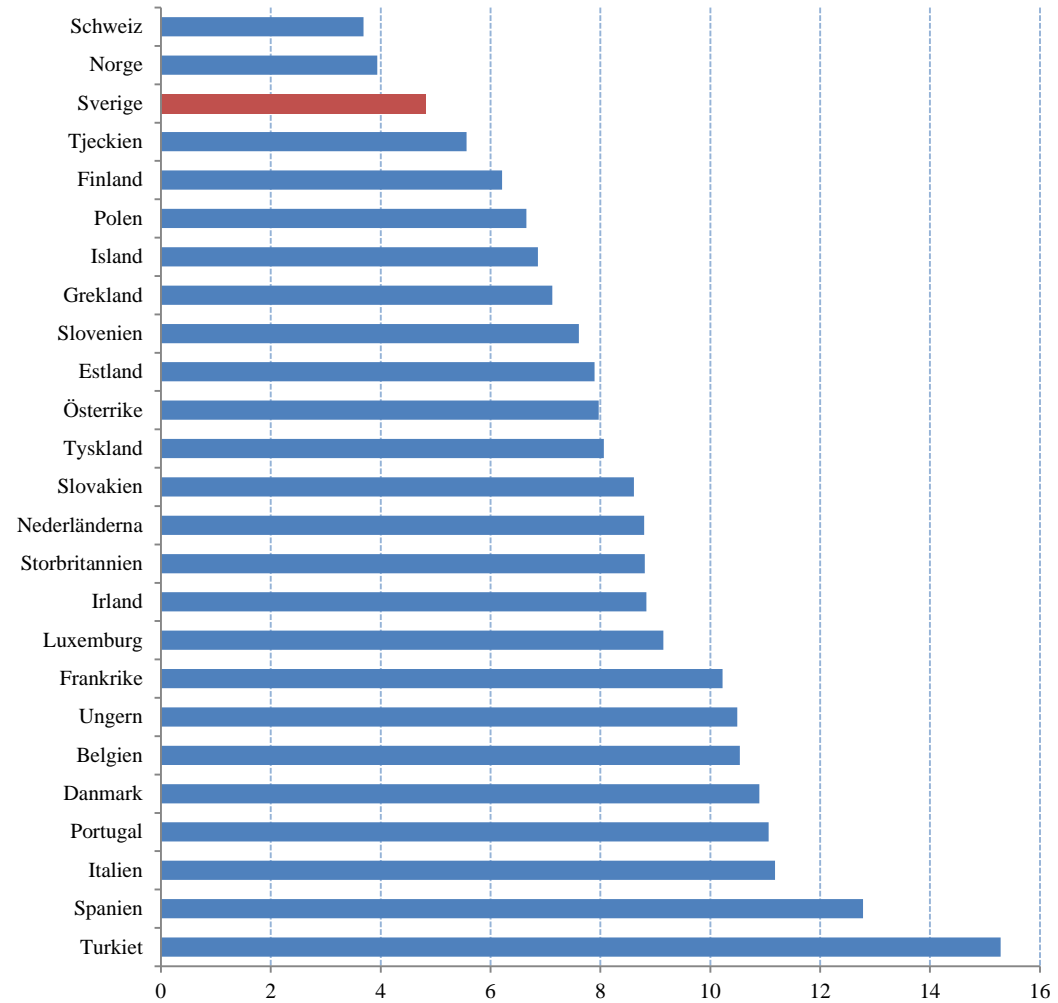
The study

- Very topical issue
- Convincing research methodology
- Low-skilled immigrants and low-skilled natives can be complements
- More complex tasks natives
 - existing workplaces
 - moves to other workplaces

Implications for Sweden

- Danish question: How does low-skilled immigration affect wages for low-skilled natives?
- Swedish question: What are the effects of various ways of promoting the integration of immigrants into the labour market
 - Temporary "entry jobs" with lower minimum wages
 - Permanent low-skilled jobs with lower minimum wages
- Minimise the spillover effects on wages for those who already have jobs
- Could the Danish data say something about how the wage effects on natives depend on wage developments for immigrants?

Share of low-skilled jobs, 2015



Plåt- och ventföretagen

- Employer of tinsmiths (*plåtslagare*)
 - High school (*yrkesprogram*)
 - Apprenticeship training (*yrkesbevis*)
- Minimum wage: 24 000 – 25 000 kronor
- Qualified job but also with some simple tasks
 - transport of material
 - cleaning
 - simple assemblage
- Proposal: define new professional category to do the simpler tasks
 - lower pay is required

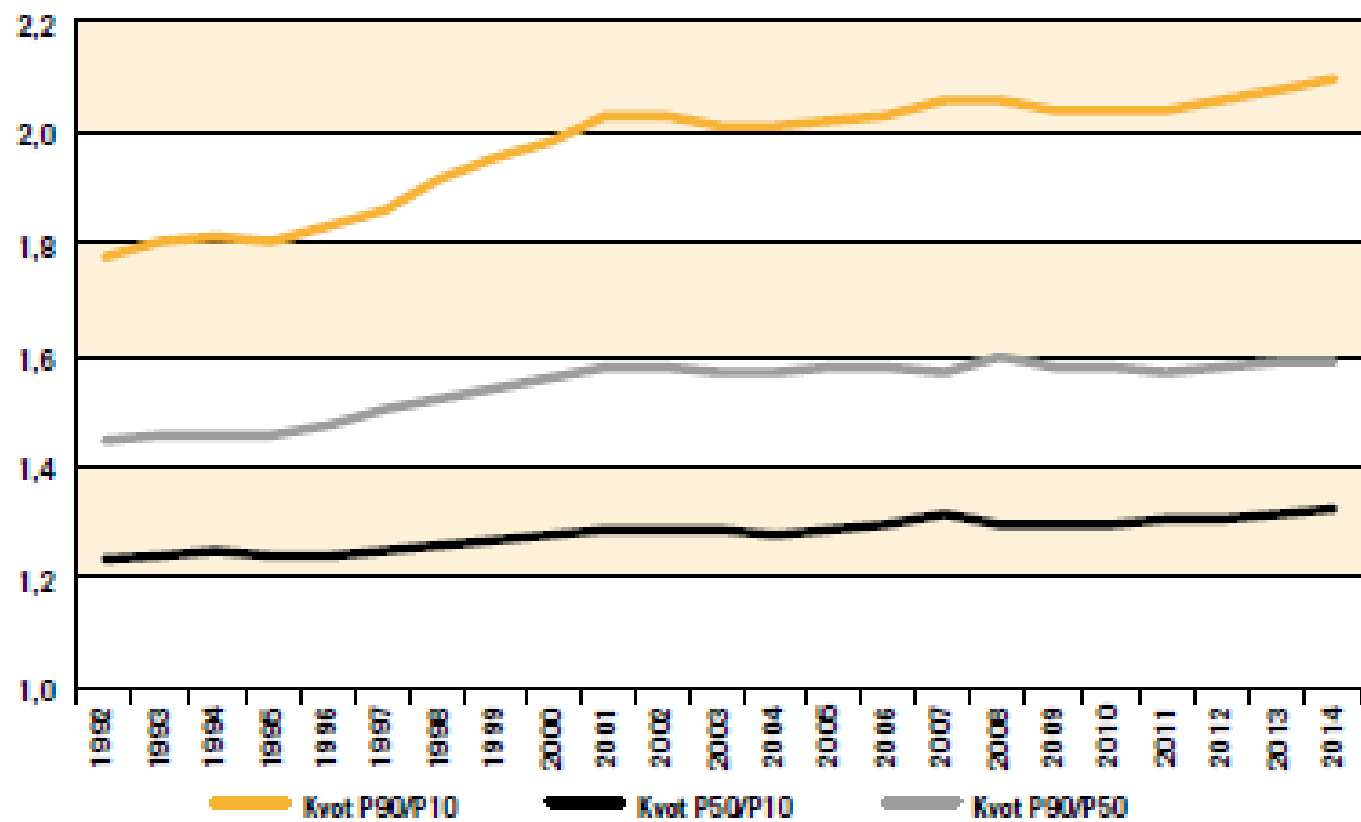
Survey study by Arbetsmarknadsekonomiska rådet

- 1/3 of answering firms say they would hire on new low-skilled jobs if they could pay only 14 000-15 000 kronor
 - *receptionist*
 - *allt-i-allo*
 - *hustomte*
 - *vaktmästare*
 - *handräckning*
 - *hantlangning*
 - *plock-och-pack*
- Potential demand for auxilliary tasks that could be kept apart from existing jobs

Conclusions

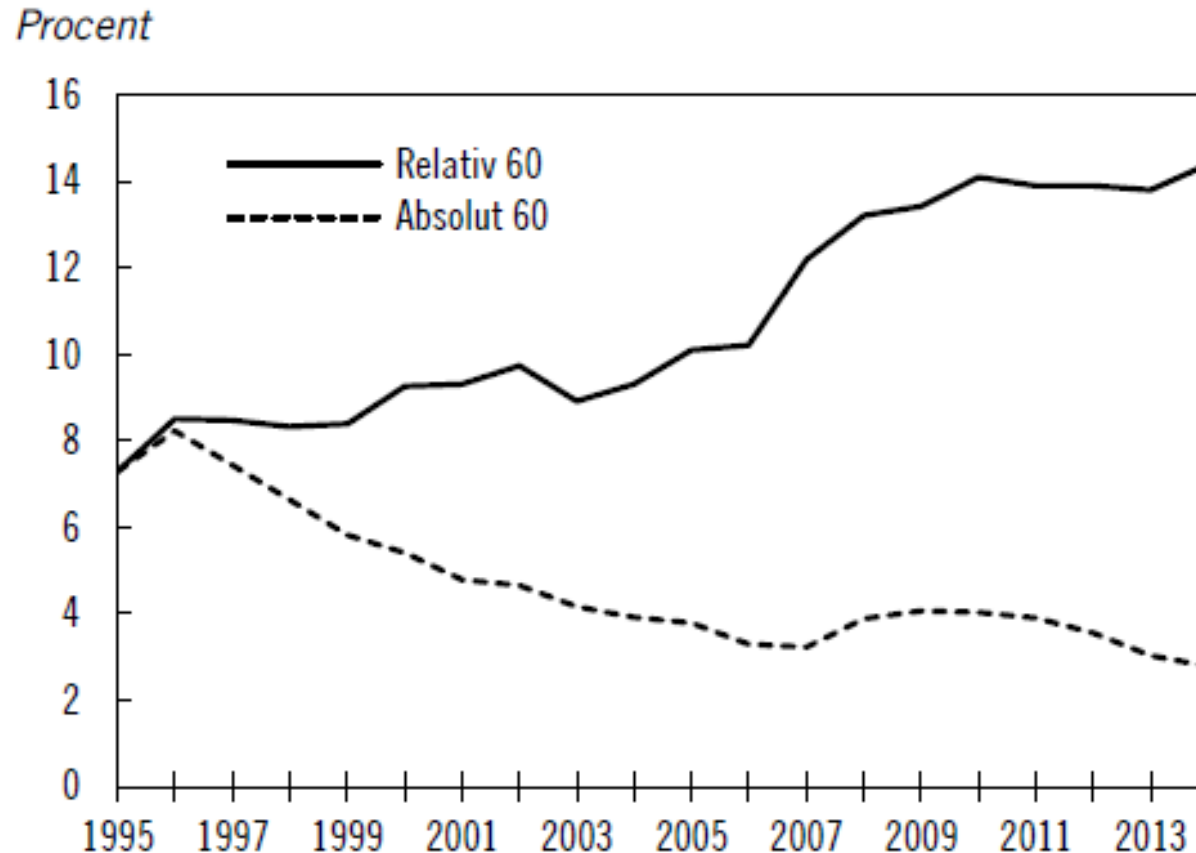
- The risk that lower minimum wages for new entrants would reduce other wages has probably been overstated
- But great uncertainty and specific groups may be hurt
- But don't take risks
- Lower minimum wages should be combined with changes in tax and transfer system to reduce disparities in disposable incomes
- Tripartite negotiations?

Diagram 6.7 Lönespridning 1992–2014



Källor: Medlingsinstitutet och SCB

Andelar av hushållen i relativ respektive absolut fattigdom



Relativ fattigdom = Inkomst mindre än 60 % av medianinkomsten under året.

Absolut fattigdom = Inkomst mindre än 60 % av den prisjusterade medianinkomsten 1995.